

Public Document Pack



To: Councillor Milne, Convener; Councillor Finlayson; Vice Convener; and Councillors Boulton, Cooney, Cormie, Corall, Crockett, Dickson, Greig, Jaffrey, Lawrence, Malik, Jean Morrison MBE, Nicoll, Jennifer Stewart, Sandy Stuart and Thomson .

Town House,
ABERDEEN 15 March 2016

PLANNING DEVELOPMENT MANAGEMENT COMMITTEE

The Members of the **PLANNING DEVELOPMENT MANAGEMENT COMMITTEE** are requested to meet in Committee Room 2 - Town House on **THURSDAY, 17 MARCH 2016 at 10.00 am.**

FRASER BELL
HEAD OF LEGAL AND DEMOCRATIC SERVICES

B U S I N E S S

WHERE THE RECOMMENDATION IS ONE OF APPROVAL

- 9 Froghall Road and Froghall Terrace - erection of 41 flats - 151316 (Pages 3 - 44)
Planning Reference – 151316

PLEASE NOTE THIS IS AN UPDATED REPORT ALONG WITH LETTERS OF REPRESENTATIONS.

The documents associated with this application can be found at:-
<http://planning.aberdeencity.gov.uk/PlanningDetail.asp?ref=151316>

Planning Officer – Nicholas Lawrence

Website Address: www.aberdeencity.gov.uk

Should you require any further information about this agenda, please contact Lynsey McBain on 01224 522123 or email lymcbain@aberdeencity.gov.uk

This page is intentionally left blank

Agenda Item 9

Planning Development Management Committee

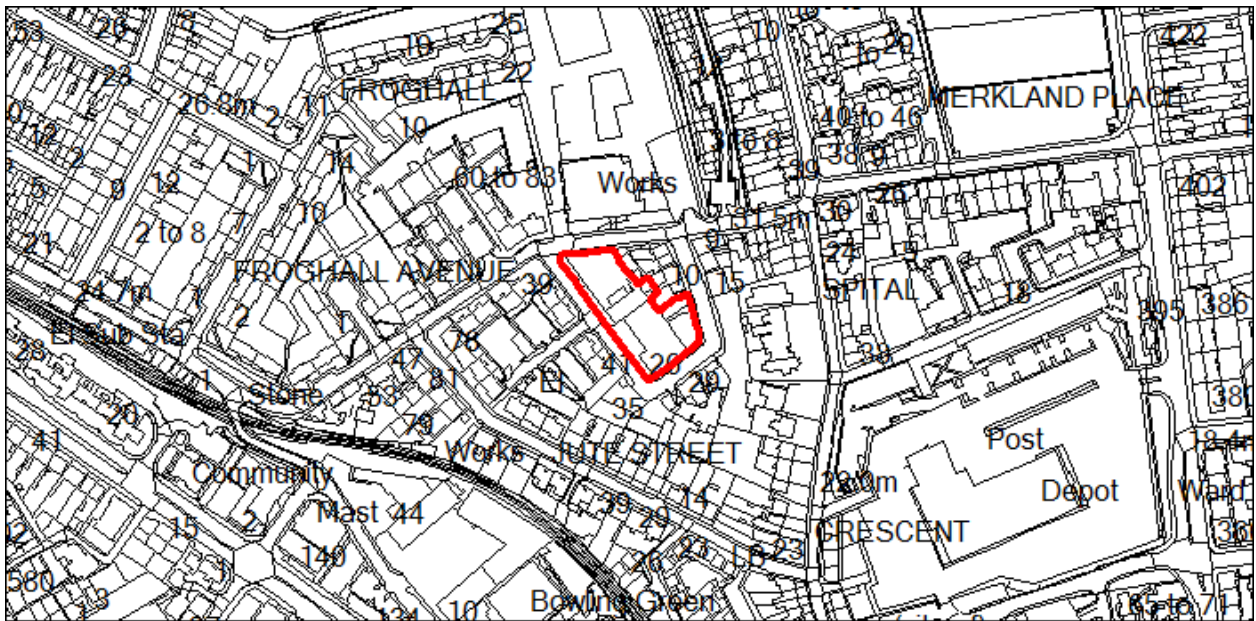
SITE BOUNDED BY, FROGHALL ROAD /
FROGHALL TERRACE, ABERDEEN

FOR THE ERECTION OF 41 NO. TWO AND
THREE BEDROOM APARTMENTS WITH
ASSOCIATED INFRASTRUCTURE AND OPEN
SPACE.

For: Chap Group (Aberdeen) Ltd

Application Type: Detailed Planning Permission
Application Ref.: P151316
Application Date: 12/08/2015
Officer: Nicholas Lawrence
Ward: George Street/Harbour (M Hutchison/J
Morrison/N Morrison)

Advert: None
Advertised on: N/A
Committee Date: 17/03/2016
Community Council : No comments
received.



RECOMMENDATION:

Willingness to conditionally approve subject to a legal agreement covering:
affordable housing; car club contributions; STF payment; education
(primary and secondary); community facilities; sport and recreation; open
space.

APPLICATION SITE

The site (the Site) of some 0.30 hectares at the corner of Froghall Road and Froghall Terrace and is currently occupied by a builders yard/storage area and office/light industrial uses, together with areas of parking. The eastern part is at a significantly lower level, marked by a retaining wall.

The immediate and wider area is defined, save for the BT depot to the north, by residential development of 2 to 4 storeys and is characterised, in part, by courtyard styles.

The Site occupies a sustainable location with a full range of employment, educational, commercial, cultural uses accessible by means of transport other than the 'single owner' private motor car.

In terms of designations; the Site falls within a mixed use area as set out in the Aberdeen Local Development Plan 2012 and constitutes previously-developed land (i.e. a brownfield site).

RELEVANT HISTORY

Not relevant

PROPOSED DEVELOPMENT

41 flats are proposed, together with amenity space and parking.

Comprising 3 individual blocks; Block A (4 floors) sits at the junction of Froghall Terrace with Froghall Road and predominately fronts the eastern boundary; block B (4 floors) occupies the southern quadrant; whereas block C (3 floors) abuts the western boundary. However, due to the changing levels, Block C is read as an individual component, with its own access, amenity space and parking area.

The amenity and parking areas to blocks A and B are designed within a courtyard framed to the rear by the retaining wall. The largest western amenity area is separated from car parking and a pedestrian gateway is provided onto Froghall Terrace. Additional areas of amenity are afforded to block B, together with a raised area above the retaining wall.

The courtyard accommodates 33 parking spaces, including 2 disabled, together with motor cycle parking. Access is off the eastern boundary and also accommodates an allocated car club space and a visitor parking space. Secure cycle storage for 34 bicycles within the 'basement level' of block B. With regard to site boundaries, the wall to Froghall Terrace is retained, save the pedestrian access point, and the entrance will also incorporate a granite wall, which will also form the boundary to the parking area of block C. The retaining wall is a formidable structure and will be prominent from the road and within the site. To provide visual interest and add to the biodiversity of the area this structure will

become a green wall. The scheme also includes tree planting in front of blocks A and B.

Supporting Documents

All drawings and the supporting documents listed below relating to this application can be viewed on the Council's website at

<http://planning.aberdeencity.gov.uk/PlanningDetail.asp?ref=151316>

On accepting the disclaimer enter the application reference quoted on the first page of this report.

REASON FOR REFERRAL TO COMMITTEE

The application has been referred to the Planning Development Management Committee because 7 letters of representation have been received. Accordingly, the application sits outwith the scope of the Council's Scheme of Delegation.

CONSULTATIONS

Roads Development Management – No objection subject to conditions and STF payment.

Environmental Health – Recommend planning conditions regarding contamination.

Developer Contributions Team – Contributions required in respect of education (primary and secondary); community facilities; sport and recreation; open space..

Communities, Housing and Infrastructure (Flooding) – Concerns over adequacy of local sewage network to cater for the additional flows.

Scottish Water – No objection

Waste Management - No objections subject to certain technical criteria being met.

Community Council – No response

REPRESENTATIONS

Objections relate to the following matters:

- Impact upon the character of the area;
- Contrary to policies on residential development;
- Increased traffic and adequacy of parking;
- Lack of improvement to the infrastructure of the area;
- Impact of sewage drainage and flood management; and
- Density of the development.

PLANNING POLICY

National Policy and Guidance

- National Planning Framework 3
- Scottish Planning Policy
- Creating Places
- Planning Advice Note 75: Planning for Transport
- Planning Advice Note 78: Inclusive Design

Aberdeen Local Development Plan and Supplementary Guidance (SG)

- I1 Infrastructure Delivery and Developer Contributions
- T2 Managing the Transport Impact of Development
- D1 Architecture and Placemaking
- D2 Design and Amenity
- D3 Sustainable and Active Travel
- NE4 Open Space Provision in New Development
- NE6 Flooding and Drainage
- R6 Waste Management Requirements for New Development
- R7 Low and Zero Carbon Buildings
- SG Infrastructure and Developers Contribution Manual
- SG Open Space
- SG Transport and Accessibility

Proposed Aberdeen Local Development Plan

- D1 Quality Placemaking by design
- I1 Infrastructure Delivery and Planning Obligations
- T2 Managing the Transport Impact of Development
- T3 Sustainable and Active Travel
- NE4 Open Space Provision in New Development
- NE6 Flooding, Drainage and Water Quality
- R6 Waste Management Requirements for New Development
- R7 Low and Zero Carbon Buildings, and Water Efficiency

EVALUATION

MAIN ISSUES

The main issues are firstly; the principle of the development; secondly, the affect upon the character and appearance of the area; thirdly, the impact upon amenity; and fourthly, transportation and parking. All issues must have regard to the provisions of the Development Plan and other material considerations.

PLANNING POLICY FRAMEWORK AND MATERIALITY

Sections 25 and 37(2) of the Town and Country Planning (Scotland) Act 1990, as amended (the Act) requires that proposals shall be determined in accordance

with the Development Plan unless other material considerations indicate otherwise.

In this instance the Development Plan comprises the adopted Aberdeen Local Development Plan (ALDP), together with a suite of Supplementary Guidance documents.

Materiality is set, in part, by the Proposed Aberdeen Local Development Plan (PALDP). Whilst the PALDP has yet to undergo independent scrutiny as is not a statutory part of the Development Plan it has been adopted by the Council as constituting a material consideration in the decision-taking process and therefore must be accorded appropriate weight.

At the national level other material considerations include, albeit not limited to, National Planning Framework 3 (NPF3), Scottish Planning Policy (SPP); Creating Places; and Planning Advice Notes (PAN) 75 *Planning for Transport* and 78 *Inclusive Design*.

ASSESSMENT OF MAIN ISSUES

Principle of the Development

The Site is within a mixed use area as set out under policy H2 of the ADLP, which will permit residential development provided it takes into account the existing uses and character of the surrounding area.

The principle of the proposed use therefore accords with the provisions of the development plan provided the aforementioned factors are taken into account.

Affect upon the Character and Appearance of the Area

The assessment context set out within ALDP policy D1 looks for development to come forward that reflects and improves character and visual amenity, whilst securing a high quality of design. Regard to context is also set out within SPP (i.e. under the heading of *policy principles*) and Creating Places.

In this instance the character of the area, save that of the BT depot and the Site, is dominated by residential development that adopts both courtyard and strong linear arrangements that follow the local road network. Therefore the form of the proposed development (i.e. linear blocks creating a courtyard) would compliment rather than harm the character of the area.

On the matter of scale, the proposal encompasses a mixture of building heights ranging from 2 through to 4 storeys, excluding roofs. Indeed, allowing for the topography of the area (i.e. significant fall from Spittal to Jute Street) those properties along the northern aspect are seen as buildings of greater scale than their built form. It is by virtue of the changing heights of the site coupled to the surrounding residential development and topography that the scale of proposed

development does not constitute an alien element in the cityscape and consequently would not harm the character and appearance of the area.

On the question of design; securing high quality design goes beyond the mere aesthetic. Policy D1 of the ADLP, as with Scottish Government guidance, all seek not to be prescriptive or to stifle innovation in the visual appearance and design of development. In this instance the visual proposed maintains key elements of the surrounding courtyard and residential development (i.e. vertical emphasis of windows - solid to void ratio – simple pallet of materials), together with an asymmetrical pitched roof that accommodates the upper level of accommodation. The areas of amenity space and their anthropological connection with the accommodation and use of the changing levels provides a clear sense of place as sought with policy D1 of PLPA and guidance set within the SPP.

Turning to density this is usually set against the number of dwellings per hectare (dph). Whilst ADLP policy H3 (Density) sets a notional figure of 30 dph and above, this is only applicable to sites over 1 hectare in area. Here the ADLP merely requires that an appropriate density of development is sought. At the national level, the Scottish Government looks for an effective use of land and seeks to secure higher density housing in sustainable locations. Given the sustainable location and the form of development coupled to the level of amenity provided the density is considered appropriate and comparable to other contextual flatted developments. Therefore the number of units is not out of character with the area.

In terms of the planning balance it is considered that the scale, form, design and number of proposed residences are not harmful to the character and appearance of the area.

Residential Amenity

Privacy and the protection of general amenity is an important design objective and planning outcome in ensuring that residents of properties bounding any development and occupiers of proposed new dwellings feel at ease within and outwith their homes.

Only the latter element (i.e. the amenity of occupiers of the development) is addressed within ADLP policy D2 (Design and Amenity) and policy H2 critically only considers the residential amenity afforded existing residential accommodation where commercial, business and industrial developments are being considered in mixed use areas.

In any urban environment there will be aspects of overlooking between residences, together with amenity areas that afford greater or lesser degrees of privacy. The arrangement of block A places the bedrooms to the rear (i.e. inward) aspect of the scheme, which is feature common to the area. The distances between the rear of block A to the garden of the nearest dwelling is some 16 metres, whereas this distance is significantly less in regard to the

existing properties. Therefore the proposed separation distance exceeds the current arrangement and it is deemed acceptable. Block C follows the rear line of the neighbouring properties and the rear amenity area replicates the garden areas of numbers 2-18 Froghall Road. As such this aspect will have no greater impact upon neighbouring amenity than many existing relationships between dwellings and rear gardens in the locality. On the matter of the distances between front to front elevations the proposal accords with that along Froghall Road.

Transportation / Parking Issues

On this matter, there is always a balance to be struck between levels of car parking and amenity space, together with mechanisms to reduce the dependency upon the 'single ownership' private motor car.

The scheme meets the parking requirements, with the provision of a car club parking space, and the Roads Development Management Team are supportive of the application subject to:

1. securing restrictions prohibiting cars from waiting at any times adjacent to each of each entrance on the south side of the frontage.
2. a condition promoting the use of means of transport other than the private motor car by way of a travel pack; and
3. a contribution to the Strategic Transport Fund

Allowing for the technical advice received from the Roads Development Management Team it is considered that the proposed development will not have an adverse impact on the road network or parking.

Other Issues

Capacity of Infrastructure

A number of representations on the application referenced the lack of capacity of the surface water and sewerage network and instances of local flooding. The flooding team of the Council have raised a question on the capacity of the existing infrastructure to cater for the proposed development and the current capacity of the Scottish Water infrastructure. Whilst Scottish Water don't object to the proposed development, their consultation response judiciously notes that *"that this does not confirm that the proposed development can currently be serviced"*.

Allowing for the potentiality that the scheme may not be capable of being serviced, this issue can be addressed by an appropriately worded planning condition.

Affordable Housing

The proposal provides for 25% of the flats to be affordable and this provision accords with the adopted policies of the ALDP and will be secured by way of a legal agreement. This equates to 10.25 units, 10 within the development and the 0.25% being addressed by way of a commuted sum.

Developer Obligations

The Developer obligations team have stated that the scheme attracts contributions in respect of education (primary and secondary); community facilities; sport and recreation; and open space. Again controlled via the legal agreement.

RECOMMENDATION

Willingness to conditionally approve subject to a legal agreement covering affordable housing; car club contributions; STF payment; education (primary and secondary); community facilities; sport and recreation; open space; together with appropriately worded planning conditions.

REASONS FOR RECOMMENDATION

The proposed development by virtue of its function, form and design coupled to the promotion of sustainable urban travel complies with policies I1 (Infrastructure Delivery and Developer Contributions); T2 (Managing the Transport Impact of Development); D1 (Architecture and Placemaking); D2 (Design and Amenity); D3 (Sustainable and Active Travel); NE4 (Open Space Provision in New Development); NE6 (Flooding and Drainage); R6 (Waste Management Requirements for New Development) of the Aberdeen Local Development Plan 2012; together with advice contained within Scottish Planning Policy; Creating Places; and Planning Advice Notes 75 and 78 (Planning for Transport and Inclusive Design respectively).

CONDITIONS

1. No development shall take place until full details of the materials (including colour of render including pantone where relevant) to be used in the construction of the external surfaces of the development hereby permitted have been submitted to and approved in writing by the Local Planning Authority. Development shall be carried out in accordance with the approved details.

Reason: To ensure a satisfactory appearance of the development and in the interest of the visual amenity of the area to comply with policies D1 and D2 of the Aberdeen Local Development Plan 2012.

2. No cables, aerials, satellite or other communication equipment, flues, pipework (except rainwater goods) shall be fixed to any outward facing elevation of the development hereby approved.

Reason: In the interest of the visual amenity of the area and high quality design and to comply with policies D1 and D2 of the Aberdeen Local Development Plan 2012.

3. The development hereby approved shall not be occupied until the cycle parking facilities shown on drawing No. A5390/P(--)022 have been fully implemented and made available for use. The cycle parking facilities shall thereafter be retained for use by the occupants of, and visitors to the development at all times.

Reason: In the interest of promoting and securing sustainable modes of transport and to comply with policy D3 of the Aberdeen Local Development Plan 2012.

4. No part of the development hereby approved shall be occupied until the refuse and recycling facilities indicated on the approved drawings have been fully implemented and made available for use. These facilities shall thereafter be retained for use at all times.

Reason: To ensure the provision of satisfactory facilities for the storage of refuse and recycling and to comply with policy R6 of the Aberdeen Local Development Plan 2012.

5. The whole of the amenity areas shown on the approved drawings (including terraced gardens) shall be retained permanently for the benefit of the occupiers of the development hereby permitted.

Reason: In order that the local planning authority may be satisfied as to the amenity space provision in the scheme and to comply with policy NE4 of the Aberdeen Local Development Plan 2012.

6. Prior to the commencement of development details of the proposed outdoor furniture as indicated on approved drawing A5390/P(--)004B shall be submitted to an approved in writing by the local planning authority and the development shall be carried out in accordance with the approved details.

Reason: In the interest of the visual and public amenity of the area to comply with policies D2 and D5 of the Aberdeen Local Development Plan 2012.

7. Notwithstanding the approved drawings no part of the development hereby permitted shall be occupied until precise details of the materials, including

specification, colour, jointing and the permeability of hard surfaces have been submitted to and approved in writing by the local planning authority. The agreed scheme shall be completed prior to the occupation of any part of the development.

Reason: In the visual and public realm interest of the development and in the interest of flood management to comply with policies D1 D2, D5 and NE6 of the Aberdeen Local Development Plan 2012.

8. Prior to the occupation of any part of the development hereby approved details of a travel pack including details how it is to be promoted to residents shall be submitted to and approved in writing by the local planning authority.

Reason: In order to promote sustainable patterns of urban transport and to comply with policy D3 of the Aberdeen Local Development Plan 2012.

9. Prior to the occupation of any residential unit the vehicular accesses as shown on Drawing No. A5390/P(--)004B is constructed in full accordance with the design standards of the Aberdeen City Council.

Reason: To ensure a satisfactory means of access is provided in the interests of road safety

10. No development shall take place until there has been submitted to and approved in writing by the Local Planning Authority a scheme for landscaping, which shall include hard surfacing, the green wall, means of enclosure and planting of the development.

Reason: To enhance the appearance of the development in the interest of the visual amenities of the area and to comply with policies D1 and D2 of the Aberdeen Local Development Plan 2012

11. All planting, seeding or turfing comprised in the approved scheme of landscaping shall be carried out prior to the occupation of any part of the development; and any trees or plants which within a period of 5 years from the completion of the development die, are removed or become seriously damaged or diseased shall be replaced in the next planting season with others of similar size and species. All hard landscaping and means of enclosure shall be completed before the development is occupied.

Reason: To enhance the appearance of the development in the interest of the visual amenities of the area and to comply with policies D1 and D2 of the Aberdeen Local Development Plan 2012.

12. If piling works are required in the construction of the development the method of piling shall be agreed in writing prior to those works commencing on site. There shall be no driven piling unless there are no other alternatives due to engineering considerations. The details of driven piling shall also be submitted to and agreed in writing by the Council and implemented in strict accordance with those details.

Reason: In order to safeguard the amenity of the local area and neighbouring residents at unsocial hours and to comply with policy H2 of the Aberdeen Local Development Plan 2012

13. No unit of residential accommodation unit of residential hereby permitted shall be occupied until written confirmation to the written satisfaction of the Local Planning Authority has been submitted demonstrating that the public foul sewerage network can cope with the flows from the proposed development.

Reason: In this interest of flood management and to comply with policy NE6 of the Aberdeen Local Development Plan 2012

14. The vehicle parking area shall be completed, delineated and available for use as shown on the approved plans prior to the occupation of any residential unit and shall thereafter be retained for vehicle parking

Reason: To ensure that adequate parking provision is retained

15. The car club space shown on the plans hereby approved shall be provided and made available for use before any apartment/part of the Development is occupied. Thereafter the space shall be retained and used only for parking cars associated with the Car Club.

Reason: To limit car ownership/use and encourage sustainable modes of transport in accordance with policy T2 and of the Aberdeen Local Development Plan 2012

16. Prior to the occupation of any part of the development the applicant shall have secured A Traffic Regulation Order to secure the retention of the car club and visitor parking space shown on the approved drawings.

Reason: To limit car ownership/use and encourage sustainable modes of transport and in accordance with policy T2 and of the Aberdeen Local Development Plan 2012

17. Prior to the occupation of any part of the development hereby approved details of the area for the waiting restrictions shall be submitted to and approved

in writing by the local planning authority and the agreed details shall be implemented before any part of the development is occupied.

Reason: In the interest of highway safety and to encourage sustainable modes of transport and in accordance with policy T2 and of the Aberdeen Local Development Plan 2012

18. No development shall take place unless it is carried out in full accordance with a scheme to address any significant risks from contamination on the site that has been approved in writing by the planning authority.

The scheme shall follow the procedures outlined in "Planning Advice Note 33 Development of Contaminated Land" and shall be conducted by a suitably qualified person in accordance with best practice as detailed in "BS10175 Investigation of Potentially Contaminated Sites - Code of Practice" and other best practice guidance and shall include:

1. an investigation to determine the nature and extent of contamination
2. a site-specific risk assessment
3. a remediation plan to address any significant risks and ensure the site is fit for the use proposed
4. verification protocols to demonstrate compliance with the remediation plan

Reason: To comply with policy R2 of the Aberdeen Local Development Plan 2012

19. No residential unit hereby approved shall be occupied building unless:

1. any long term monitoring and reporting that may be required by the approved scheme of contamination or remediation plan or that otherwise has been required in writing by the planning authority is being undertaken

and

2. a report specifically relating to the building(s) has been submitted and approved in writing by the planning authority that verifies that remedial works to fully address contamination issues related to the building(s) have been carried out,

No residential unit shall be occupied unless a report has been submitted and approved in writing by the planning authority that verifies that the remedial works have been carried out in full accordance with the remediation plan

Reason: To comply with policy R2 of the Aberdeen Local Development Plan 2012

PI

From: webmaster@aberdeencity.gov.uk
Sent: 26 August 2015 09:59
To: PI
Subject: Planning Comment for 151316

Comment for Planning Application 151316

Name : Iain Fielding
Address : 39 Spencer Court
36 Froghall Terrace
AB243PF

Telephone : [REDACTED]
Email : [REDACTED]
type :

Comment : The development will be a fantastic addition to the area, sadly I must object based on my concern over the increased traffic volume placed on Froghall Terrace.

Currently the road is very narrow with poor quality pedestrian walkways; it has a blind summit at the top leading onto Spital and a very narrow and awkward cross over onto Markland lane.

I have recently bought in the king's court development and know a further 100 + houses will be built along with 200+ student rooms on the BT site.

Aberdeen city council should make new developers study the impact of their developments and look at ways to improve the surrounding access.

I believe this may be a common concern with residents after 3 industrial units with minimal traffic will soon be replaced with in excess of 500 dwellings.

I would greatly appreciate if a member of the council could contact me to discuss my concerns and potential remedies to the issues faced on Froghall Terrace before an accident occurs.

If measures can be made to improve Froghall Terrace I will happily accept and welcome the development.

IMPORTANT NOTICE: This e-mail (including any attachment to it) is confidential, protected by copyright and may be privileged. The information contained in it should be used for its intended purposes only. If you receive this email in error, notify the sender by reply email, delete the received email and do not make use of, disclose or copy it. Whilst we take reasonable precautions to ensure that our emails are free from viruses, we cannot be responsible for any viruses transmitted with this email and recommend that you subject any incoming email to your own virus checking procedures. Unless related to Council business, the opinions expressed in this email are those of the sender and they do not necessarily constitute those of Aberdeen City Council. Unless we expressly say otherwise in this email or its attachments, neither this email nor its attachments create, form part of or vary any contractual or unilateral obligation. Aberdeen City Council's incoming and outgoing email is subject to regular monitoring.

This page is intentionally left blank

PI

From: webmaster@aberdeencity.gov.uk
Sent: 25 August 2015 10:36
To: PI
Subject: Planning Comment for 151316

Comment for Planning Application 151316

Name : Ian Dredge
Address : 29 Spencer Court
36 Froghall terrace
Aberdeen
Ab24 3pf

Telephone : [REDACTED]

Email [REDACTED]
type :

Comment : I approve of the continued redevelopment of the Froghall area however I am concerned about the lack of improvement of the infrastructure of the area. The roads around Froghall Terrace have become extremely worn and rough in the last few years with no repairs. The road around the end of Froghall/Elmbank Terrace with the bridge over that railway is now beyond repair. With more heavy plant vehicles traveling around to build this proposed development the roads will only get worse. There is also a lack of any small higher quality shops in the area. The small shop on Froghall terrace is in disrepair and does not match the quality of development from Barrat and this proposed development. The council need this improve this area as clearly property developers can see the requirements to improve it.

IMPORTANT NOTICE: This e-mail (including any attachment to it) is confidential, protected by copyright and may be privileged. The information contained in it should be used for its intended purposes only. If you receive this email in error, notify the sender by reply email, delete the received email and do not make use of, disclose or copy it. Whilst we take reasonable precautions to ensure that our emails are free from viruses, we cannot be responsible for any viruses transmitted with this email and recommend that you subject any incoming email to your own virus checking procedures. Unless related to Council business, the opinions expressed in this email are those of the sender and they do not necessarily constitute those of Aberdeen City Council. Unless we expressly say otherwise in this email or its attachments, neither this email nor its attachments create, form part of or vary any contractual or unilateral obligation. Aberdeen City Council's incoming and outgoing email is subject to regular monitoring.

This page is intentionally left blank

PI

From: webmaster@aberdeencity.gov.uk
Sent: 25 August 2015 16:20
To: PI
Subject: Planning Comment for 151316

Comment for Planning Application 151316

Name : Louise Dredge
Address : 29 Spencer Court
36 Froghall Terrace
Aberdeen

Telephone :

Email : [REDACTED]

type :

Comment : As a member of this community, it is apparent that new interest in this area is growing. This is the fourth new planning application for development in a very small area. Two of which are already in development. There is the new student flats on Causewayend, two sets of student building at the cross roads of Causewayend and canal rd, residential and student building on the former BT site by Telereal Trilium.

The main concern for people living here is that the roads and surrounding infrastructure is not to a good enough standard to support the increased traffic and footfall in the area. The roads are narrow and in a state of disrepair. Furthermore there is a lack of services in the area. There are no shops, post offices etc, which is a cause of concern.

IMPORTANT NOTICE: This e-mail (including any attachment to it) is confidential, protected by copyright and may be privileged. The information contained in it should be used for its intended purposes only. If you receive this email in error, notify the sender by reply email, delete the received email and do not make use of, disclose or copy it. Whilst we take reasonable precautions to ensure that our emails are free from viruses, we cannot be responsible for any viruses transmitted with this email and recommend that you subject any incoming email to your own virus checking procedures. Unless related to Council business, the opinions expressed in this email are those of the sender and they do not necessarily constitute those of Aberdeen City Council. Unless we expressly say otherwise in this email or its attachments, neither this email nor its attachments create, form part of or vary any contractual or unilateral obligation. Aberdeen City Council's incoming and outgoing email is subject to regular monitoring.

This page is intentionally left blank

PI

From: webmaster@aberdeencity.gov.uk
Sent: 12 September 2015 19:47
To: PI
Subject: Planning Comment for 151316

Comment for Planning Application 151316

Name : Dr BJM WEST

Address : The Hive 69 Jute Street Aberdeen AB24 3HA

Telephone : [REDACTED]

Email [REDACTED]

type :

Comment : Dear Mr Lawrence:

As a resident and property owner in Jute St for more than 30 years I am concerned about the impact of this new development on extant sewage drainage and flood management systems in the area and trust that the current drainage systems will be updated to accommodate such a vast increase in water flow. Our property in Jute Street is low lying and has been subjected to flooding in the past due to high groundwater levels and poor street level drainage.

In addition I also have concerns about traffic management around the area which is currently chaotic at times and occasionally dangerous for pedestrians.

I have no direct objection to this housing development just these concerns which I trust will be taken into consideration.

IMPORTANT NOTICE: This e-mail (including any attachment to it) is confidential, protected by copyright and may be privileged. The information contained in it should be used for its intended purposes only. If you receive this email in error, notify the sender by reply email, delete the received email and do not make use of, disclose or copy it. Whilst we take reasonable precautions to ensure that our emails are free from viruses, we cannot be responsible for any viruses transmitted with this email and recommend that you subject any incoming email to your own virus checking procedures. Unless related to Council business, the opinions expressed in this email are those of the sender and they do not necessarily constitute those of Aberdeen City Council. Unless we expressly say otherwise in this email or its attachments, neither this email nor its attachments create, form part of or vary any contractual or unilateral obligation. Aberdeen City Council's incoming and outgoing email is subject to regular monitoring.

This page is intentionally left blank

PI

From: Elizabeth Lilley [REDACTED]
Sent: 08 September 2015 11:13
To: PI
Subject: Planning objection 151316 - 8 September 2015.PDF
Attachments: Planning objection 151316 - 8 September 2015.PDF; ATT00001.txt

Good morning

Please find attached objection letter in respect of planning application number 151316.

This has also been sent today by recorded post.

I should be grateful if you would acknowledge safe receipt.

Kind regards
Elizabeth Lilley

Elizabeth Lilley
27 Froghall Terrace
Aberdeen
AB24 3JJ

BY RECORDED DELIVERY

Aberdeen City Council
Planning Reception
Planning & Sustainable Development
Marischal College
Broad Street
Aberdeen
AB10 1AB

Date: 8 September 2015

Dear Sirs

**OBJECTION TO APPLICATION REFERENCE 151316
SITE BOUNDED BY FROGHALL ROAD/FROGHALL TERRACE, ABERDEEN**

I am writing to object to the application by Chap Group (Aberdeen) Ltd for full planning permission for the erection of 41 two and three bedroom apartments with associated infrastructure and open space at the site bounded by Froghall Road/Froghall Terrace, Aberdeen.

I received neighbour notification of the application dated 23 August 2015 informing me that the deadline for representations on the application is 13 September 2015. This letter is submitted timeously and requires to be taken into account in determining the application.

I wish to object to the application on the basis of:-

- the impact of the proposed development on the surrounding buildings and character of the area;
- the density of proposed development; and
- the proposed development being contrary to policies and guidance on new residential development.

Application site

I own and reside at 27 Froghall Terrace, Aberdeen, AB24 3JJ, being the ground floor of the closest residential building to the application site. My property forms part of a detached granite building

containing two flatted dwellinghouses, with 29 Froghall Terrace being the upper flat. I note that I have separately approached and notified Chap Group (Aberdeen) Limited through their legal representative that part of the property included in the application development plan is part of the title to my property, which is registered under title number ABN53042.

The application site effectively encircles my property on all sides but one. I refer to a drawing included in the application, and which is available from the planning portal online, illustrating the likely visual effect of the application site and its immediate surroundings following development. I have attached a copy of this illustration for your information. In this attachment I have highlighted the building of which my property forms part.

This drawing in particular concerns me greatly, particularly in respect of the height of the proposed development and the effect that it will have on my privacy and available light. These concerns relate both to the effect on the building in which my property is situated and the gardens, of which there is a shared drying green and a private garden space belonging to me. Both gardens run along the length of the boundary between my, and my neighbours', property and the application site and will be directly affected by the proposed development.

General position

My general position is that I have no objection to the site being developed in principle but that the proposed design of the application site causes me concern, particularly in respect of the impact it is likely to have on my privacy and the light that my property currently receives.

Aberdeen Local Development Plan 2012

The application requires to be determined in accordance with the Aberdeen Local Development Plan 2012 (ALDP), unless material considerations indicate otherwise.

New residential development requires to comply with Policy H1 - Residential Areas and all new development is required to comply with Policy D1 - Architecture and Placemaking and Policy D2 - Design and Amenity of the ALDP.

Policy H1 requires new residential development to demonstrate that it:

1. does not constitute over development; and
2. does not have an unacceptable impact on the character or amenity of the surrounding area.

It is submitted that this proposed development, which includes a car park and four storey high apartment buildings, would constitute over development in this area. The noise created by the additional tenants and vehicle movements in such close proximity to residential development would also constitute unacceptable impact on the amenity of the surrounding area.

Policy D1 requires new development must be designed with due consideration for its context and make a positive contribution to its setting, stating that factors such as siting, scale, massing, colour,

materials, orientation, details, the proportions of building elements, together with the spaces around buildings, including streets, squares, open space, landscaping and boundary treatments, will be considered in assessing that contribution.

A significant increase in scale is proposed. The application site currently consists of a yard, until recently, used by a scaffolding company and some warehouse buildings which are currently around the same height as my property. The proposed development would consist of three four storey high apartment buildings, which will be a significant increase in height.

The applicant has stated in its design and access statement at page 18 in its site analysis that: *"use of topography of the site to its advantage by building higher within the lower section, responding to the surrounding building heights"* and *"create a continuous street elevation around the block and develop a relationship with the street character."*

I also refer to pages 26, 28, 30 and 31 of the applicant's design and access statement which contain various drawings including street elevations. I have attached these pages for your information. Page 30 is the drawing I refer to under "Application Site" above.

The South-West elevation shown at page 26 claims to be at a "harmonious building height" but references buildings which are in fact up on the Spital rather than the neighbouring buildings. The Spital is at the top of Froghall Terrace which climbs steeply to the reference buildings, which are also elevated from the Spital as they are built on a hill. The North-West elevation contained on this page shows the difference in height between the proposed development and our property.

The drawings on pages 28, 30 and 31 of the applicant's design and access statement shows the likelihood of the proposed development effectively dwarfing our property, with the most elevated part of the development sitting above the surrounding buildings. I note that in particular, the light that our property receives comes from the South side, on which the application site is situated.

I would therefore suggest that the proposed development is contrary to the provisions of Policy D1 of the ALDP and that the applicant has not been sensitive to the surrounding buildings and height as they suggest.

Policy D2 states that in order to ensure the provision of appropriate levels of amenity, privacy shall be designed into higher density housing.

The applicant has stated in its design and access statement at page 18 in its site analysis that: *"existing buildings adjacent to the site provide a limited scope for building close to the North boundary as this could limit views and quality of the flats"*.

The applicant accepts that the proposed development risks affecting the neighbouring properties. In particular I have concerns in respect of privacy. At the moment, our property is reasonably secluded and benefits from no surrounding properties directly overlooking the windows or gardens. The proposed development would overlook the property and both gardens directly. I would therefore suggest that the proposed development is contrary to this provision of Policy D2 and would have a huge impact on the use and enjoyment of my property.

Other considerations

I and my neighbours who own the first floor flatted dwellinghouse in the same building have recently incurred considerable expense carrying out repair work to the roof of our property. Following receipt of the notice of this application, we also have concerns over the impact and possible damage that the work to be carried out in connection with this sizeable development will have on these repairs and our property in general. These concerns include the use of heavy duty machinery and the likely vibrations of the building work.

In addition to these concerns, there is a large difference between the elevation of the application site, which is on a much lower level, compared to the site of our property, which is around a storey higher. Due to the location of the proposed development, a large part of the work to be undertaken will likely be carried out close to the border between the application site and our property. Again I would have some concern that this work may damage the foundations of our property together with any work undertaken to the boundary wall, which supports our property and gardens.

Conclusion

It is submitted that, due to its height, the proposed development is inappropriate for the location, that it would constitute overdevelopment and would have a negative impact on the character and amenity of the area and would result in a significant increase in scale of the application site, contrary to a number of ALDP policies.

As the proposed development is contrary to the ALDP and no material considerations have been put forward to justify the proposal, it is submitted that the application requires to be refused or amended taking into account the surrounding area and considering the site context.

I trust that the points raised in this letter will be taken into account when determining the application in due course. I should be grateful if you would acknowledge safe receipt of this objection and advise me in due course as to how the application is to proceed. If the application is to be determined by Area Committee, I wish to be allowed to speak to this objection.

If additional information to that which is currently available to view on the Council's website is submitted as part of the application, I would request that I am notified of the position and that I am given time to consider the information and to make suitable representations thereon.

Yours faithfully

[Redacted signature]

email :

[Redacted email address]

P&SD Letters of Representation		
Application Number:		
RECEIVED - 8 SEP 2015		
Nor	Sou	MAp
Case Officer Initials:		
Date Acknowledged:		

Proposals Aerial Views





Aerial view from West



Model aerial view of the proposed development

Halliday Fraser Munro

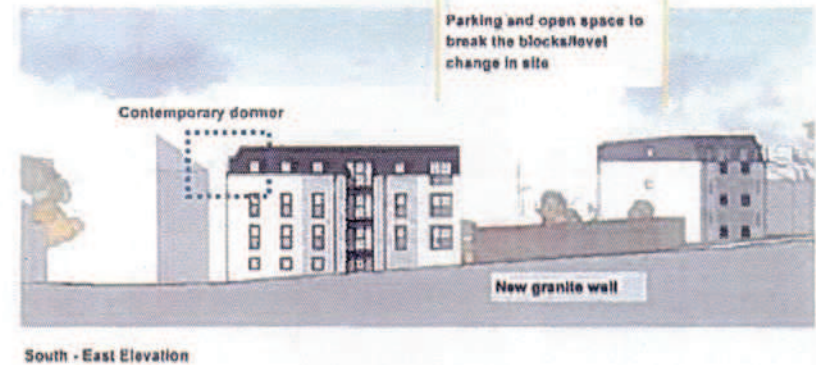
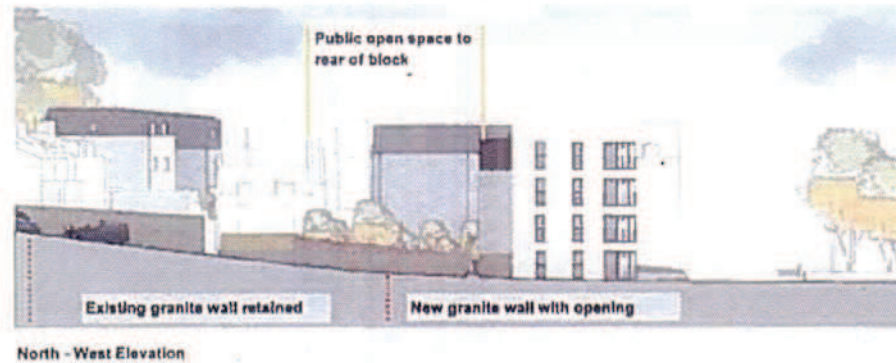
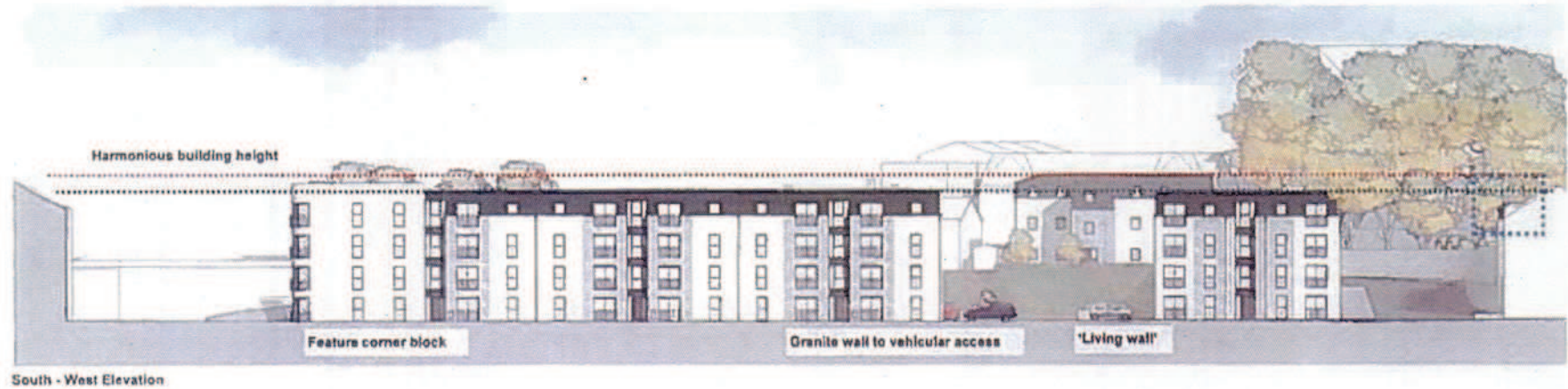
Proposals Street Perspectives

View from Froghall Terrace and Froghall Road Junction



Model view from Froghall Terrace looking South East

Proposals Street Elevations



This page is intentionally left blank

Elizabeth Lilley
27 Froghall Terrace
Aberdeen
AB24 3JJ

BY RECORDED DELIVERY

Aberdeen City Council
Planning Reception
Planning & Sustainable Development
Marischal College
Broad Street
Aberdeen
AB10 1AB

Date: 8 September 2015

Dear Sirs

**OBJECTION TO APPLICATION REFERENCE 151316
SITE BOUNDED BY FROGHALL ROAD/FROGHALL TERRACE, ABERDEEN**

I am writing to object to the application by Chap Group (Aberdeen) Ltd for full planning permission for the erection of 41 two and three bedroom apartments with associated infrastructure and open space at the site bounded by Froghall Road/Froghall Terrace, Aberdeen.

I received neighbour notification of the application dated 23 August 2015 informing me that the deadline for representations on the application is 13 September 2015. This letter is submitted timeously and requires to be taken into account in determining the application.

I wish to object to the application on the basis of:-

- the impact of the proposed development on the surrounding buildings and character of the area;
- the density of proposed development; and
- the proposed development being contrary to policies and guidance on new residential development.

Application site

I own and reside at 27 Froghall Terrace, Aberdeen, AB24 3JJ, being the ground floor of the closest residential building to the application site. My property forms part of a detached granite building

containing two flatted dwellinghouses, with 29 Froghall Terrace being the upper flat. I note that I have separately approached and notified Chap Group (Aberdeen) Limited through their legal representative that part of the property included in the application development plan is part of the title to my property, which is registered under title number ABN53042.

The application site effectively encircles my property on all sides but one. I refer to a drawing included in the application, and which is available from the planning portal online, illustrating the likely visual effect of the application site and its immediate surroundings following development. I have attached a copy of this illustration for your information. In this attachment I have highlighted the building of which my property forms part.

This drawing in particular concerns me greatly, particularly in respect of the height of the proposed development and the effect that it will have on my privacy and available light. These concerns relate both to the effect on the building in which my property is situated and the gardens, of which there is a shared drying green and a private garden space belonging to me. Both gardens run along the length of the boundary between my, and my neighbours', property and the application site and will be directly affected by the proposed development.

General position

My general position is that I have no objection to the site being developed in principle but that the proposed design of the application site causes me concern, particularly in respect of the impact it is likely to have on my privacy and the light that my property currently receives.

Aberdeen Local Development Plan 2012

The application requires to be determined in accordance with the Aberdeen Local Development Plan 2012 (**ALDP**), unless material considerations indicate otherwise.

New residential development requires to comply with Policy H1 - Residential Areas and all new development is required to comply with Policy D1 - Architecture and Placemaking and Policy D2 - Design and Amenity of the ALDP.

Policy H1 requires new residential development to demonstrate that it:

1. does not constitute over development; and
2. does not have an unacceptable impact on the character or amenity of the surrounding area.

It is submitted that this proposed development, which includes a car park and four storey high apartment buildings, would constitute over development in this area. The noise created by the additional tenants and vehicle movements in such close proximity to residential development would also constitute unacceptable impact on the amenity of the surrounding area.

Policy D1 requires new development must be designed with due consideration for its context and make a positive contribution to its setting, stating that factors such as siting, scale, massing, colour,

materials, orientation, details, the proportions of building elements, together with the spaces around buildings, including streets, squares, open space, landscaping and boundary treatments, will be considered in assessing that contribution.

A significant increase in scale is proposed. The application site currently consists of a yard, until recently, used by a scaffolding company and some warehouse buildings which are currently around the same height as my property. The proposed development would consist of three four storey high apartment buildings, which will be a significant increase in height.

The applicant has stated in its design and access statement at page 18 in its site analysis that: *"use of topography of the site to its advantage by building higher within the lower section, responding to the surrounding building heights"* and *"create a continuous street elevation around the block and develop a relationship with the street character."*

I also refer to pages 26, 28, 30 and 31 of the applicant's design and access statement which contain various drawings including street elevations. I have attached these pages for your information. Page 30 is the drawing I refer to under "Application Site" above.

The South-West elevation shown at page 26 claims to be at a "harmonious building height" but references buildings which are in fact up on the Spital rather than the neighbouring buildings. The Spital is at the top of Froghall Terrace which climbs steeply to the reference buildings, which are also elevated from the Spital as they are built on a hill. The North-West elevation contained on this page shows the difference in height between the proposed development and our property.

The drawings on pages 28, 30 and 31 of the applicant's design and access statement shows the likelihood of the proposed development effectively dwarfing our property, with the most elevated part of the development sitting above the surrounding buildings. I note that in particular, the light that our property receives comes from the South side, on which the application site is situated.

I would therefore suggest that the proposed development is contrary to the provisions of Policy D1 of the ALDP and that the applicant has not been sensitive to the surrounding buildings and height as they suggest.

Policy D2 states that in order to ensure the provision of appropriate levels of amenity, privacy shall be designed into higher density housing.

The applicant has stated in its design and access statement at page 18 in its site analysis that: *"existing buildings adjacent to the site provide a limited scope for building close to the North boundary as this could limit views and quality of the flats"*.

The applicant accepts that the proposed development risks affecting the neighbouring properties. In particular I have concerns in respect of privacy. At the moment, our property is reasonably secluded and benefits from no surrounding properties directly overlooking the windows or gardens. The proposed development would overlook the property and both gardens directly. I would therefore suggest that the proposed development is contrary to this provision of Policy D2 and would have a huge impact on the use and enjoyment of my property.

Other considerations

I and my neighbours who own the first floor flatted dwellinghouse in the same building have recently incurred considerable expense carrying out repair work to the roof of our property. Following receipt of the notice of this application, we also have concerns over the impact and possible damage that the work to be carried out in connection with this sizeable development will have on these repairs and our property in general. These concerns include the use of heavy duty machinery and the likely vibrations of the building work.

In addition to these concerns, there is a large difference between the elevation of the application site, which is on a much lower level, compared to the site of our property, which is around a storey higher. Due to the location of the proposed development, a large part of the work to be undertaken will likely be carried out close to the border between the application site and our property. Again I would have some concern that this work may damage the foundations of our property together with any work undertaken to the boundary wall, which supports our property and gardens.

Conclusion

It is submitted that, due to its height, the proposed development is inappropriate for the location, that it would constitute overdevelopment and would have a negative impact on the character and amenity of the area and would result in a significant increase in scale of the application site, contrary to a number of ALDP policies.

As the proposed development is contrary to the ALDP and no material considerations have been put forward to justify the proposal, it is submitted that the application requires to be refused or amended taking into account the surrounding area and considering the site context.

I trust that the points raised in this letter will be taken into account when determining the application in due course. I should be grateful if you would acknowledge safe receipt of this objection and advise me in due course as to how the application is to proceed. If the application is to be determined by Area Committee, I wish to be allowed to speak to this objection.

If additional information to that which is currently available to view on the Council's website is submitted as part of the application, I would request that I am notified of the position and that I am given time to consider the information and to make suitable representations thereon.

Yours faithfully

[Redacted signature]

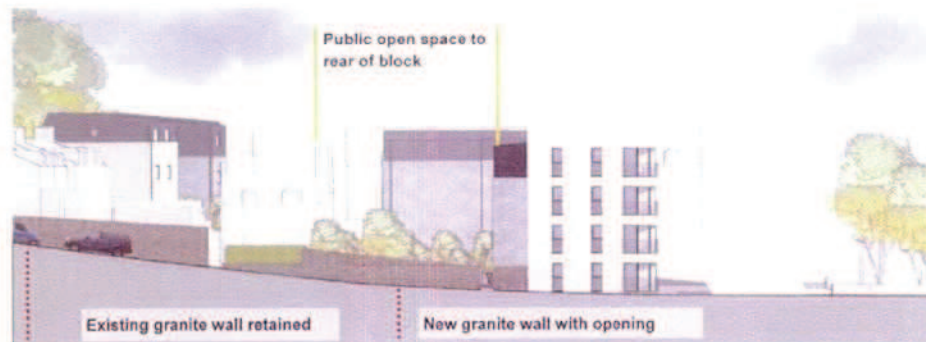
email:

[Redacted email address]

Proposals Street Elevations



South - West Elevation



North - West Elevation



South - East Elevation

Proposals Street Perspectives

View from Froghall Terrace and Froghall Road junction



Model view from Froghall Terrace looking South East

Aerial view from West



Model aerial view of the proposed development

Halliday Fraser Munro

Proposals Aerial Views

Aerial view from East



Model aerial view of the proposed development

27, FROGHALL ROAD,
ABERDEEN,
AB24 3JL.

09-09-2015.

RE. PLANNING APPLICATION NO. 151316
F. DOGHALL ROAD / FROGHALL TERRACE.

DEAR MR. LAWRENCE,

THANK YOU FOR MEETING ME ON
FRIDAY 4TH SEPTEMBER AND EXPLAINING AT LENGTH
THE PLANS FOR THE DEVELOPMENT. I FELT THAT
TO YOU IT IS NOT JUST ANOTHER APPLICATION AND
YOU ACTUALLY TAKE A SYMPATHETIC ATTITUDE
TOWARDS THE RESIDENTS AND THE AREA.

I HAVE NO OBJECTION AS SUCH TO THE PROPOSAL
OTHER THAN I THINK THERE ARE TOO MANY FLATS
PROPOSED AND IN CONJUNCTION WITH THE
EXTENSIVE DEVELOPMENT AT THE B.T. SITE I HAVE
SERIOUS RESERVATIONS REGARDING THE IMPACT ON
SEWAGE, WATER, FLOOD MANAGEMENT, TRAFFIC AND
PARKING.

WITH REGARD TO PARKING, THE PROPOSED
DEVELOPMENT - 41 FLATS, 3 1/4 BEDROOM - WHICH
DOES NOT IMPLY SINGLE OCCUPANCY AS SUCH, WILL

2). NOT HAVE ADEQUATE PARKING - ONLY 38 BAYS. EVEN AT PRESENT THERE ARE CARS FROM THE SPITAL / KINGS CRESCENT AREA BEING PARKED ON FROGHALL ROAD AND WHEN THERE ARE 400 STUDENT FLATS ON THE B.T. SITE WITH NO PARKING FACILITIES, THIS DOES NOT BODE WELL FOR OUR LITTLE STREET AND ITS RESIDENTS. PERHAPS A SYSTEM OF RESIDENT PARKING PERMITS COULD ADDRESS THIS SITUATION.

CONSIDERING THAT THE LOVELY GRANITE WALL ON THE TERRACE SIDE OF THE DEVELOPMENT WILL UNFORTUNATELY GO AND THE GRANITE BUILDING ON SITE, I WOULD HOPE TO SEE A PROPER GRANITE WALL OPPOSITE OUR HOUSES NOS 23/25/27 FROGHALL ROAD.

I HOPE, AS YOU PROPOSED, TO SEE SOME TREES INTRODUCED ALONG THE PAVEMENT AS I THINK IT'S IMPORTANT TO HAVE AS MUCH GREENERY AS POSSIBLE IN THE AREA. I WILL CERTAINLY MISS MY LOVELY TREE IN THE EXISTING CAR PARK OPPOSITE MY HOUSE!

INCIDENTALLY, THE PROPOSED SITE WAS PART OF THE "ST. MACHAR GRANITE WORKS" WHERE STALKER'S + THOM'S WORLD RENOWNED GRAITE SCULPTURES WERE CREATED.

③.

THE LAST TIME DEVELOPMENT WAS CARRIED OUT IN THE AREA WAS THE BUILDING OF STUDENT FLATS ADJACENT TO MY PROPERTY WHICH WAS UNDERTAKEN BY CHAP. DURING THIS CONSTRUCTION DAMAGE (CRACKING) AND UNDERMINING OF MY PROPERTY AND THE OTHER HOUSES IN THE ROW OCCURED - THIS WAS DUE TO PILING AND FOUNDATION EXCAVATION. AS CHAP DID NOT ACCEPT RESPONSIBILITY FOR RESIDUAL DAMAGE, I HAD TO HAVE RE-ENFORCEMENT WORK CARRIED OUT - TYING OF THE REAR CORNER OF THE HOUSE AND RE-POINTING OF GRANITE AT THE FRONT.

HOPING THAT ALL CONCERNS WILL BE ADDRESSED AND RESOLVED WHERE POSSIBLE,

YOURS SINCERELY,



This page is intentionally left blank